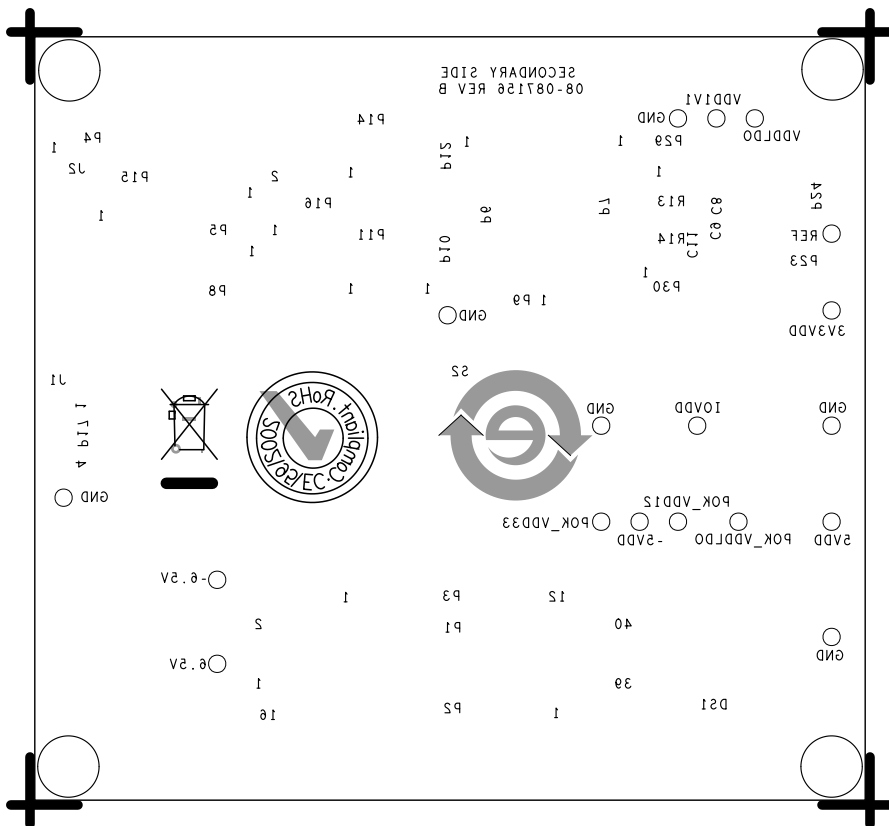
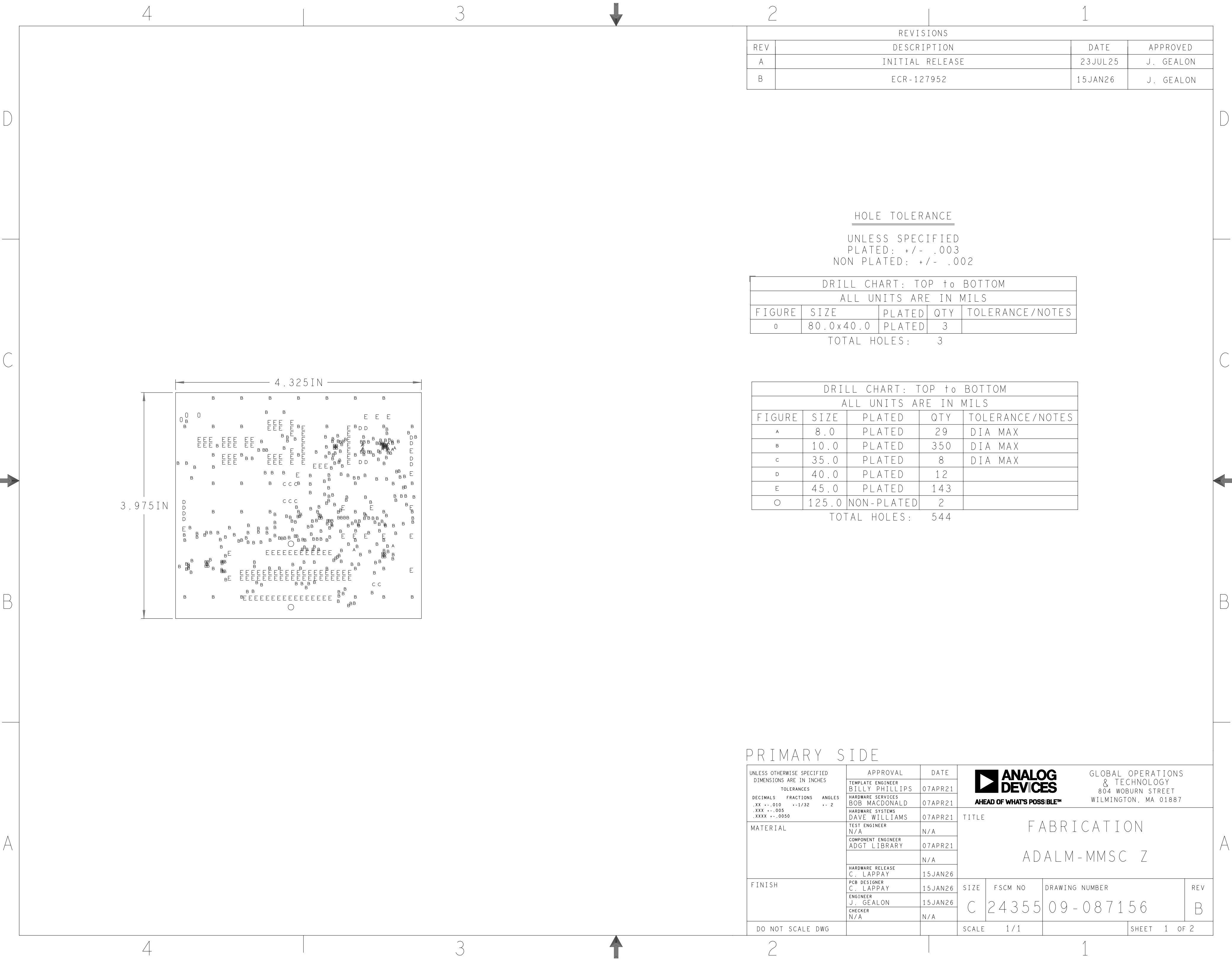


REV B





REVISIONS			
REV	DESCRIPTION	DATE	APPROVED
A	INITIAL RELEASE	23JUL25	J. GEALON
B	ECR-127952	15JAN26	J. GEALON

HOLE TOLERANCE  
UNLESS SPECIFIED  
PLATED: +/- .003  
NON PLATED: +/- .002

DRILL CHART: TOP to BOTTOM				
ALL UNITS ARE IN MILS				
FIGURE	SIZE	PLATED	QTY	TOLERANCE/NOTES
o	80.0x40.0	PLATED	3	

TOTAL HOLES: 3

DRILL CHART: TOP to BOTTOM				
ALL UNITS ARE IN MILS				
FIGURE	SIZE	PLATED	QTY	TOLERANCE/NOTES
A	8.0	PLATED	29	DIA MAX
B	10.0	PLATED	350	DIA MAX
C	35.0	PLATED	8	DIA MAX
D	40.0	PLATED	12	
E	45.0	PLATED	143	
O	125.0	NON-PLATED	2	

TOTAL HOLES: 544

PRIMARY SIDE

UNLESS OTHERWISE SPECIFIED DIMENSIONS ARE IN INCHES  TOLERANCES  DECIMALS    FRACTIONS    ANGLES .XX   -.010    --1/32    -- 2 .XXX   -.005 .XXXX   -.0050			APPROVAL		DATE		<div><div><div><div></div><div>ANALOG DEVICES</div><div>AHEAD OF WHAT'S POSSIBLE™</div></div><div>GLOBAL OPERATIONS &amp; TECHNOLOGY 804 WOBURN STREET WILMINGTON, MA 01887</div></div></div>				
			TEMPLATE ENGINEER BILLY PHILLIPS		07APR21						
			HARDWARE SERVICES BOB MACDONALD		07APR21						
			HARDWARE SYSTEMS DAVE WILLIAMS		07APR21						
MATERIAL			TEST ENGINEER N/A		N/A		TITLE  FABRICATION  ADALM-MMSC Z				
			COMPONENT ENGINEER ADGT LIBRARY		07APR21						
					N/A						
			HARDWARE RELEASE C. LAPPAY		15JAN26						
FINISH			PCB DESIGNER C. LAPPAY		15JAN26		SIZE	FSCM NO	DRAWING NUMBER	REV	
			ENGINEER J. GEALON		15JAN26						
			CHECKER N/A		N/A						
DO NOT SCALE DWG							SCALE	1 / 1		SHEET    1    OF 2	

D

- C

## B

- A

- 

## DUS

- BLIND/BURIED VIAS WITH AN ASPECT RATIO <1:1 TO BE PLATED SHUT WITH COPPER WHEN  
IN-PAD OR AS A STACKED VIA. BLIND/BURIED VIAS WITH AN ASPECT RATIO >1:1 TO BE FILLED  
WITH CONDUCTIVE EPOXY.  
INFORMATION REFER TO DRILL CHART:  
CONDUCTIVE EPOXY FILL ALL 0.XXXX INCHES DRILLED VIAS  
FILL ALL 0.XXXX INCHES DRILLED VIAS  
NOTES:  
ADDITIONAL SHORT REPORT IS SUPPLIED AND DOES NOT MATCH THE FAB DATA THEN  
REVISION IS REQUIRED.  
REVISIONS  
TO BE INSTALLED BY FABRICATOR  
NOT TO BE INSTALLED BY FABRICATOR  
CABLE  
ETCH/STAMP WITH PERMANENT NON-CONDUCTIVE INK  
E (SEE BRD ID: XXX)  
QUALITY ASSURANCE CAPABILITY RATING FOR THOSE APPROVED MATERIALS(IF APPLICABLE)  
REVISION  
FABRICATOR LOGO  
SHIPPED IN ARRAY AND KEPT INTACT  
SUBJECTED TO CUSTOMERS APPROVAL  
PASTE STENCIL GERBER TO BE PROVIDED TO ANALOG  
LINE WIDTH IS 0.00435 INCH.  
LINE SPACING IS 0.00461 INCH.

## NOVEMBER 21 2022

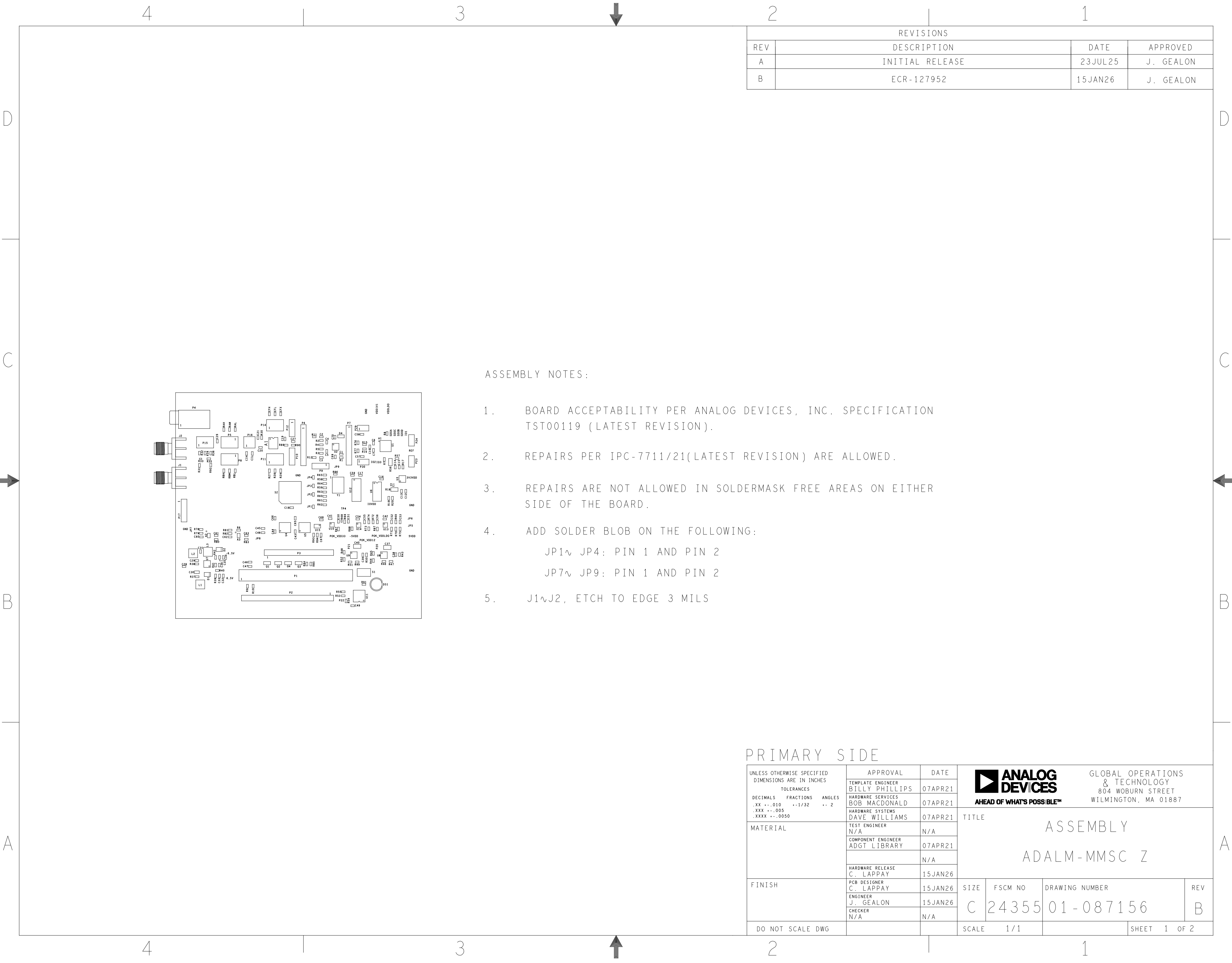
- | LAMINATION DIAGRAM |            |                             |                             |                                    |
|--------------------|------------|-----------------------------|-----------------------------|------------------------------------|
| LAYER NUMBER       | LAYER NAME | COPPER THICKNESS (OZ, INCH) | DIELECTRIC THICKNESS (INCH) | MATERIALS                          |
| 1                  | TOP        | 1 OZ, 0.0014" MIN           |                             | FINAL CU (THICKNESS AFTER PLATING) |
|                    |            |                             | TBD                         | ISOLA 370HR/EQUIVALENT             |
| 2                  | L2_GND     | 1 OZ, 0.0014" MIN           |                             | CU CLAD                            |
|                    |            |                             | TBD                         | ISOLA 370HR/EQUIVALENT             |
| 3                  | L3_PWR     | 1 OZ, 0.0014" MIN           |                             | CU CLAD                            |
|                    |            |                             | TBD                         | ISOLA 370HR/EQUIVALENT             |
| 4                  | L4_PWR     | 1 OZ, 0.0014" MIN           |                             | CU CLAD                            |
|                    |            |                             | TBD                         | ISOLA 370HR/EQUIVALENT             |
| 5                  | L5_GND     | 1 OZ, 0.0014" MIN           |                             | CU CLAD                            |
|                    |            |                             | TBD                         | ISOLA 370HR/EQUIVALENT             |
| 6                  | BOTTOM     | 1 OZ, 0.0014" MIN           |                             | FINAL CU (THICKNESS AFTER PLATING) |
- THE FINISHED PCB THICKNESS TO BE: 0.062" +/-10%

- PRIMARY SIDE



GLOBAL OPERATIONS  
& TECHNOLOGY  
804 WOBURN STREET  
WILMINGTON, MA 01887

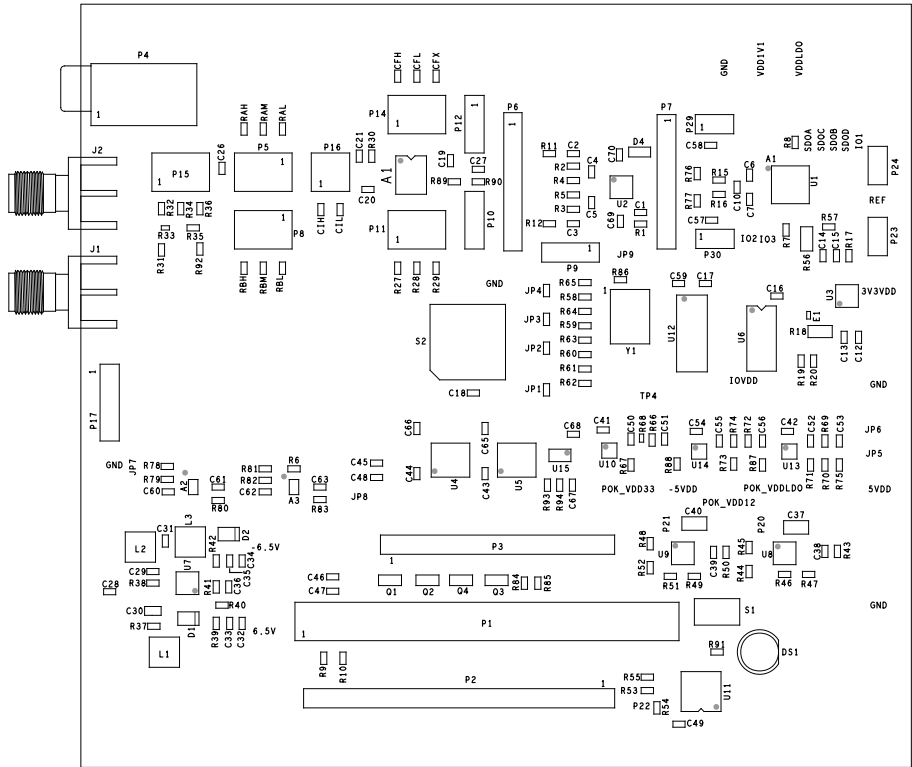
SIZE	FSCM NO	DRAWING NUMBER	REV
C	24355	09-087156	B
SCALE	1/1		SHEET 2 OF 2




REVISIONS			
REV	DESCRIPTION	DATE	APPROVED
A	INITIAL RELEASE	23JUL25	J. GEALON
B	ECR-127952	15JAN26	J. GEALON

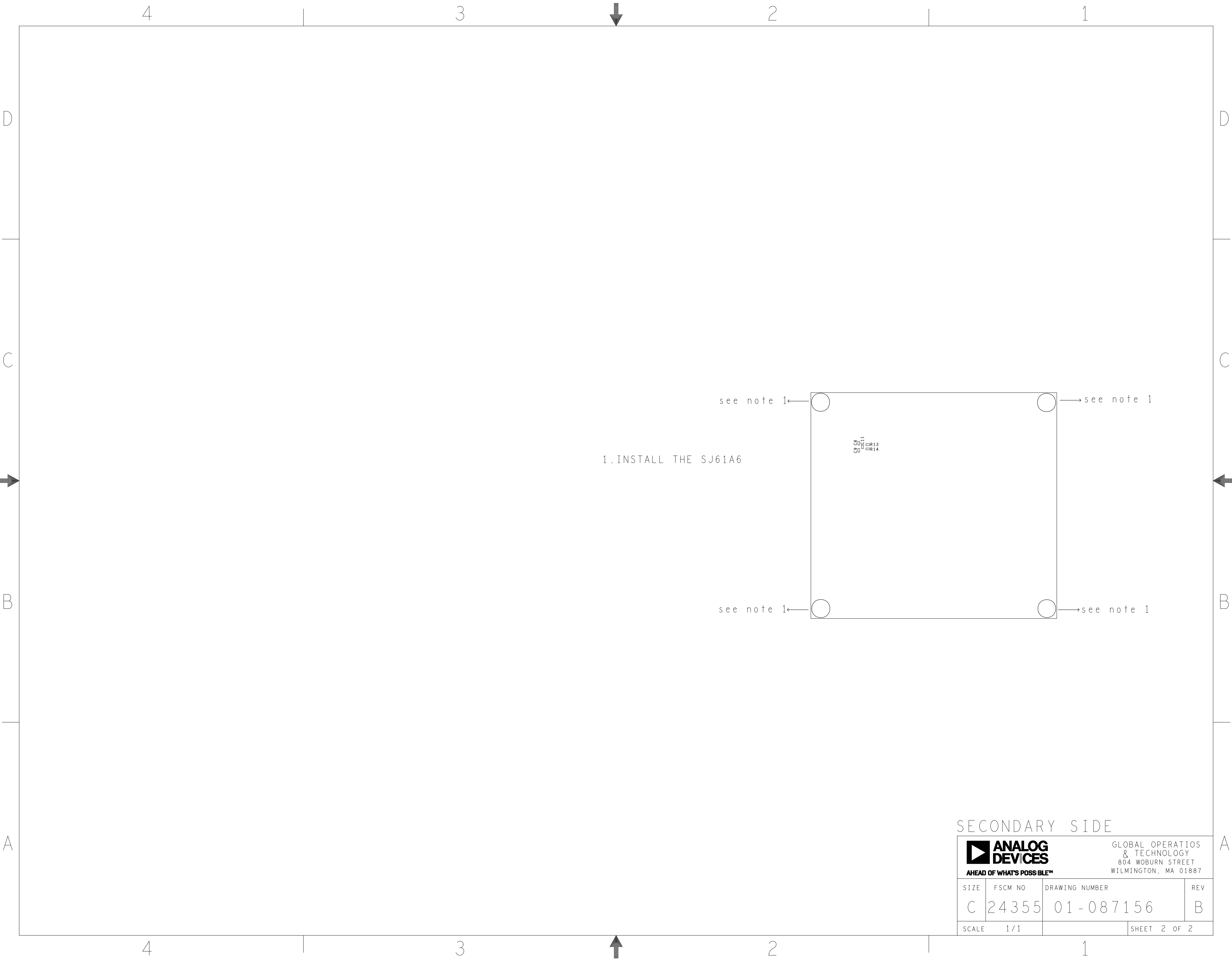
ASSEMBLY NOTES:

- BOARD ACCEPTABILITY PER ANALOG DEVICES, INC. SPECIFICATION TST00119 (LATEST REVISION).
- REPAIRS PER IPC-7711/21(LATEST REVISION) ARE ALLOWED.
- REPAIRS ARE NOT ALLOWED IN SOLDERMASK FREE AREAS ON EITHER SIDE OF THE BOARD.
- ADD SOLDER BLOB ON THE FOLLOWING:  
JP1~ JP4: PIN 1 AND PIN 2  
JP7~ JP9: PIN 1 AND PIN 2
- J1~J2, ETCH TO EDGE 3 MILS



PRIMARY SIDE

UNLESS OTHERWISE SPECIFIED DIMENSIONS ARE IN INCHES  TOLERANCES  DECIMALS   FRACTIONS   ANGLES .XX --.010   --1/32   -- 2 .XXX --.005 .XXXX --.0050	APPROVAL		DATE		<div> <b>ANALOG DEVICES</b> AHEAD OF WHAT'S POSSIBLE™</div> <div>GLOBAL OPERATIONS &amp; TECHNOLOGY 804 WOBURN STREET WILMINGTON, MA 01887</div>			
	TEMPLATE ENGINEER BILLY PHILLIPS		07APR21					
	HARDWARE SERVICES BOB MACDONALD		07APR21					
	HARDWARE SYSTEMS DAVE WILLIAMS		07APR21					
MATERIAL	TEST ENGINEER N/A		N/A		TITLE  ASSEMBLY  ADALM-MMSC Z			
	COMPONENT ENGINEER ADGT LIBRARY		07APR21					
			N/A					
	HARDWARE RELEASE C. LAPPAY		15JAN26					
FINISH	PCB DESIGNER C. LAPPAY		15JAN26		SIZE C	FSCM NO 24355	DRAWING NUMBER 01 - 087156	REV B
	ENGINEER J. GEALON		15JAN26					
	CHECKER N/A		N/A					
DO NOT SCALE DWG				SCALE     1 / 1		SHEET     1   OF 2		



1. INSTALL THE SJ61A6

see note 1


see note 1

see note 1

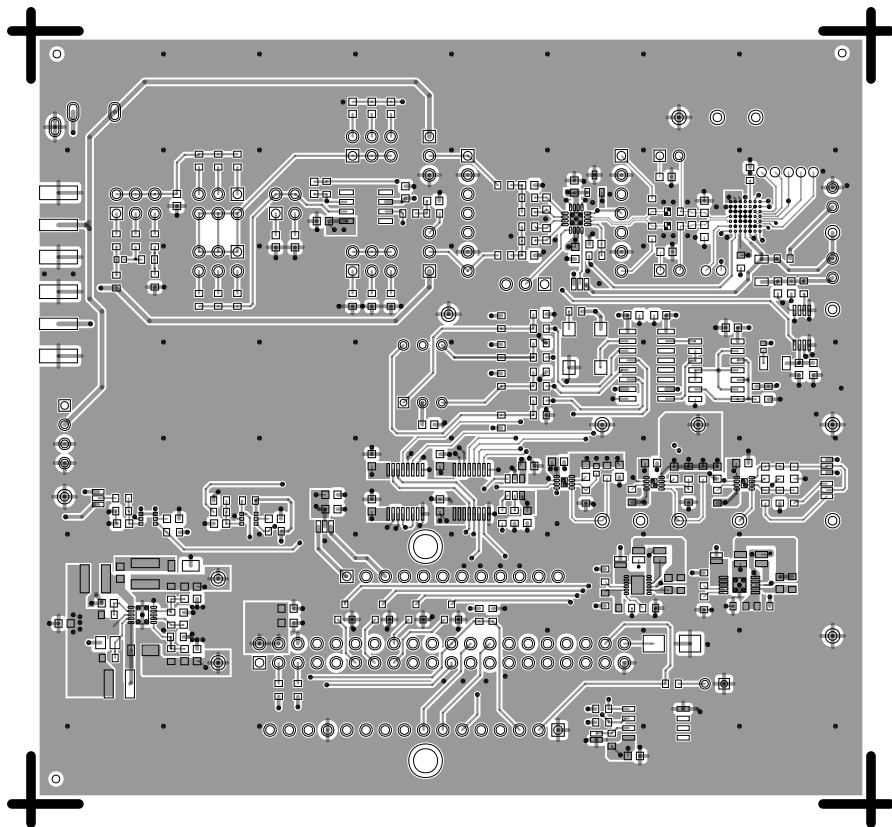
see note 1

1  
R13  
R14

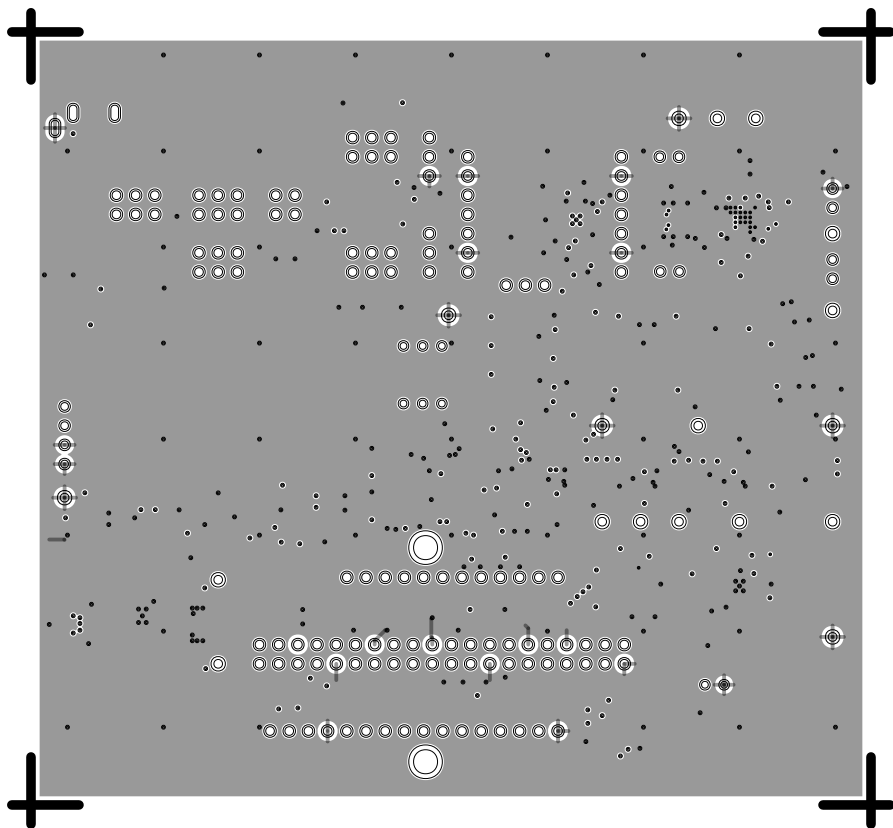
SECONDARY SIDE

		GLOBAL OPERATIONS & TECHNOLOGY 804 WOBURN STREET WILMINGTON, MA 01887	
SIZE	FSCM NO	DRAWING NUMBER	REV
C	24355	01-087156	B
SCALE	1/1	SHEET 2 OF 2	

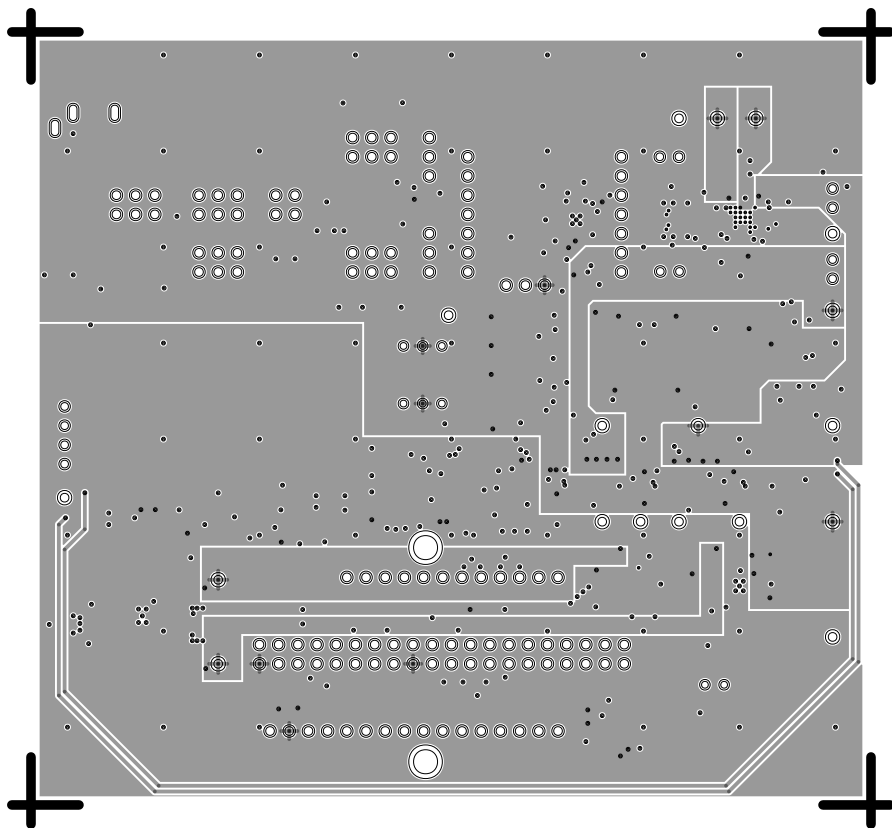
L1 PRIMARY  
08-087156-01  
REV B



L2 GND  
08-087156-07  
REV B

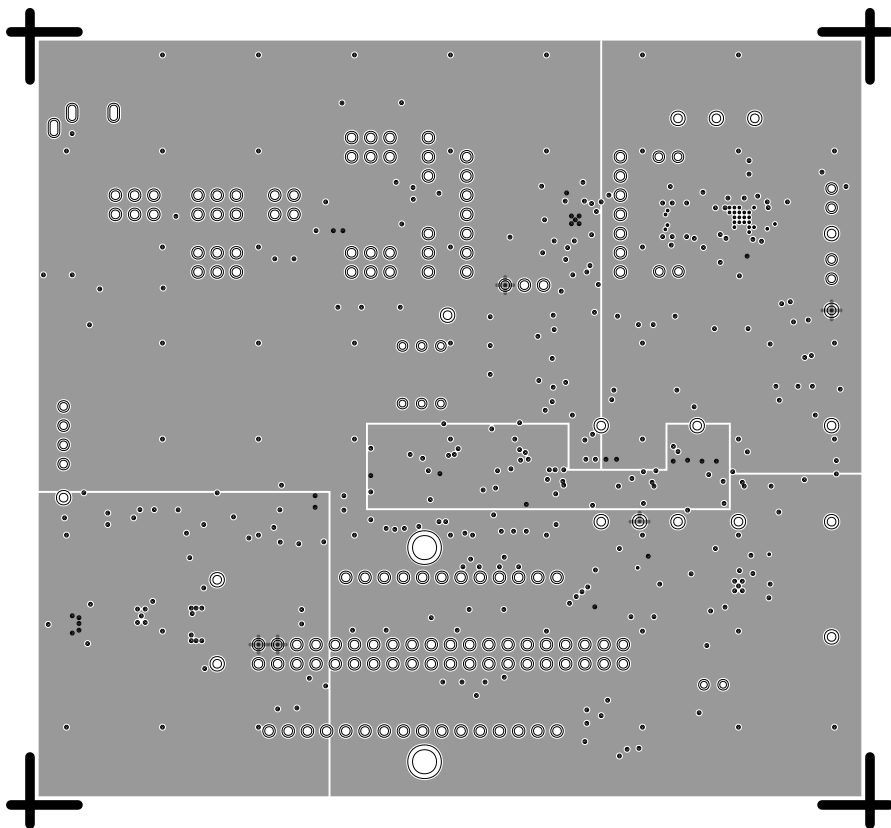


L3 PWR  
08-087156 -08  
REV B

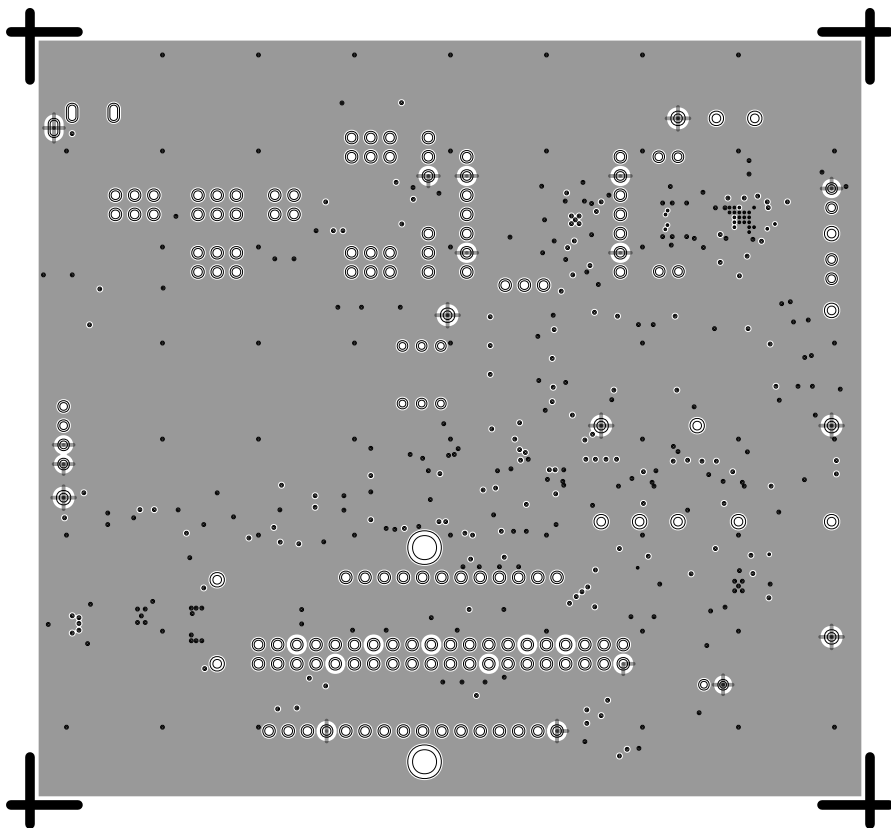




L4 PWR  
08-087156-09  
REV B



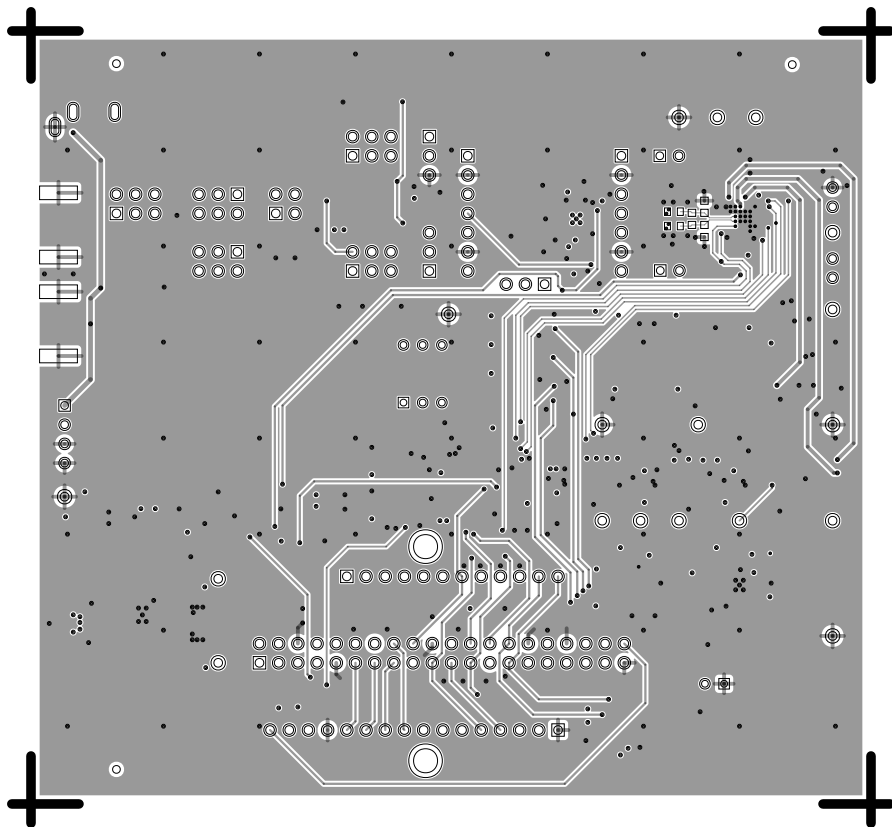
L5 GND  
08-087156 -10  
REV B



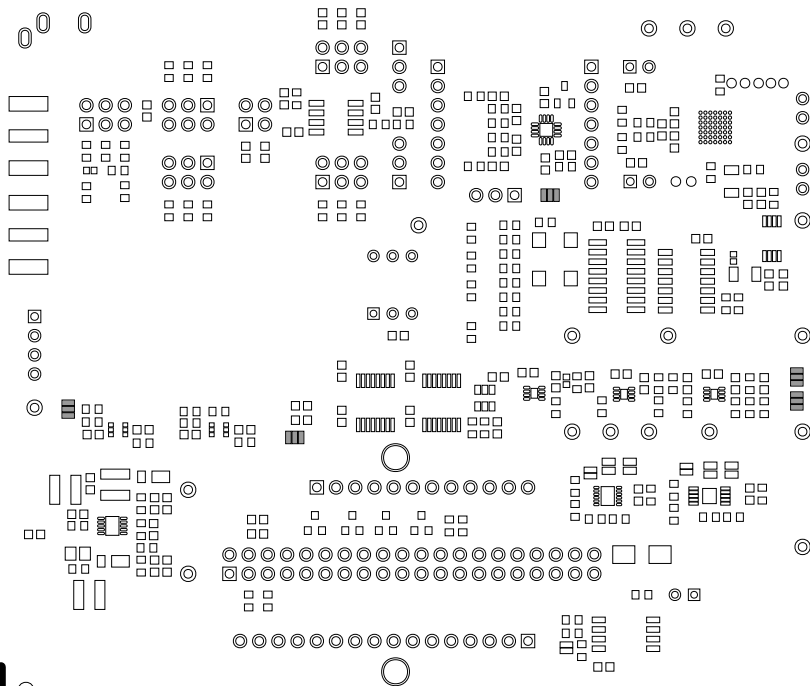
L6 SECONDARY

08-087156-02

REV B



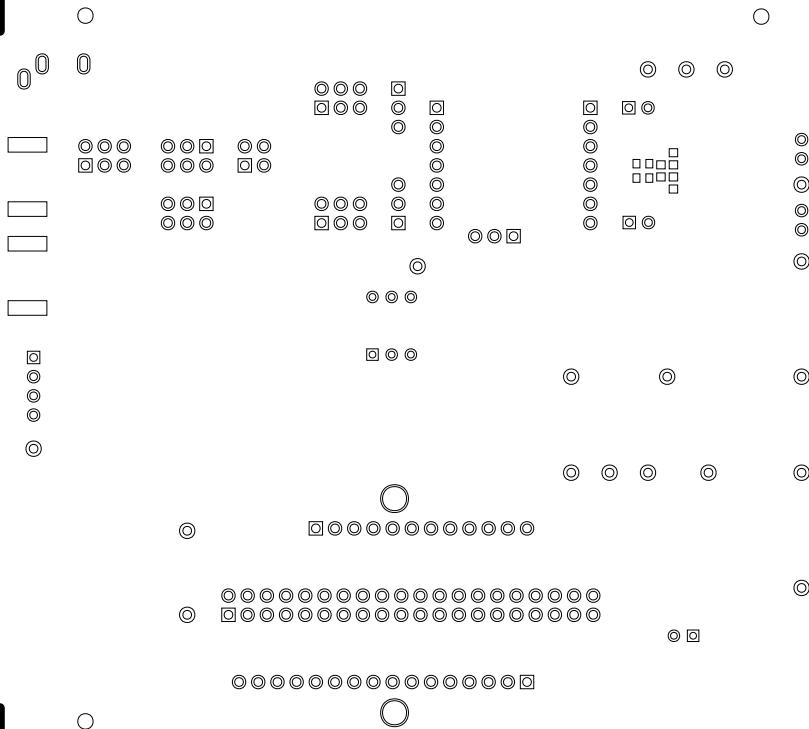
REV B



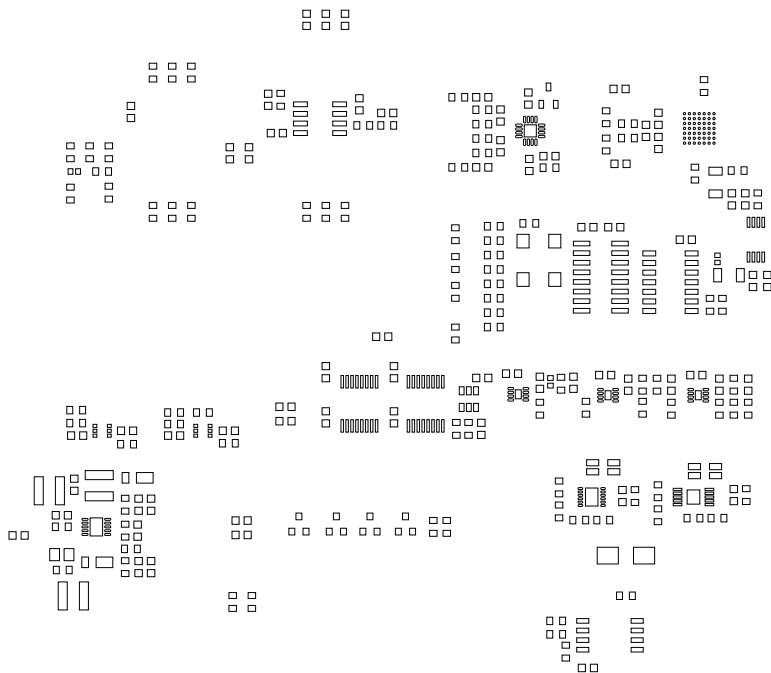
# SOLDERMASK SECONDARY

08-087156-06

REV B



PASTEMASK PRIMARY  
08-087156-11  
REV B



PASTEMASK SECONDARY  
08-087156-12  
REV B



# SILKSCREEN PRIMARY

## 08-087156-03

### REV B

